

St Botolph's C of E Primary School

'Striving to be the best we can'



School Prospectus
2023

St Botolph's C of E Primary School *'Striving to be the best we can'*

St Botolph's Church of England Primary School

Welcome to St Botolph's C of E Primary School. The information in this brochure will hopefully answer many of your queries. It includes background information about the school, its organization and curriculum and outlines our aims and philosophy.

Contents

- 2—Welcome
- 3— A Message from Headteacher
- 4 —School Governors
- 5—About our School and Staff
- 6—Our Church School
- 7—Having a Growth Mindset
- 9—School Admissions
- 10– 12—Curriculum
- 13—EYFS
- 14—Trips and Opportunities
- 15– Forces Children



Our School Vision

St Botolph's CE Primary is a welcoming, happy and forward thinking school. The development of exciting challenges in a vibrant environment will prepare our children for a rapidly changing world by making them independent learners. Through the opportunities that we provide we aim to encourage our pupils to be resilient, ambitious, active, health and have global perspective.

Through our commitment to Christian values and secure relationships we will nurture, support and respect each other.

All our children will have success today and be prepared for tomorrow.

We are committed to caring for each child by providing a high quality of education within a rich, stimulating and supportive Christian environment where every child feels secure and happy, with a sense of self worth and value in order to achieve to their full potential and grow into a responsible citizen

A message from our Headteacher

Dear Parents

I would like to welcome you to St Botolph's CE Primary School. Our aim is to help all pupils become happy, responsible, caring and self-reliant individuals. We want them to develop lively, enquiring minds and to learn to appreciate and respect our world and its people. One thing you may be sure of, your child will never fail. The staff is highly skilled at assessing each child's individual level of development and then supporting them towards achieving their full potential. Each child will develop at a different pace. We work hard to ensure that all children feel good about themselves and acquire a high level of self-esteem. If you feel successful you will always succeed.

Community links are extremely important to our school, we strive to promote knowledge and understanding of our community through close links with local people, businesses and organisations. This is done through visits by the children out into the community, visitors in school and input into the curriculum. Parent support and interest is valued highly as we see the education of our children as a partnership between home and school.

Childhood is a special time and nobody gets a second chance at it. You can count on us to do our very best to make it joyous and successful as possible for your child.

Mrs D Wilson, Headteacher

The History of St Botolph's

St Botolph's School was built in 1867 located between the two roads, Grantham Road and London Road. The acre of land was donated by the Marquis of Bristol. St Botolph's CE Primary School officially opened in 2001 and moved to a brand new purpose built building on Rookery Avenue in the summer of 2002.

Our school was founded as a Church of England Controlled School and that status is still true today. Christian values form the basis of our school life and the school has very strong links with our local parish church in Quarrington and the Lincoln Diocese.

Making A Difference
Together
Together
Making A Difference



Who are the School Governors?

Governors are like a board of directors and make decisions about how the school is run. They meet at least once per term. All Governors have equal power and are entitled to one vote. School Governors have legal duties and responsibilities. They can only act together, they cannot act individually.

Governors are made up of Parents, Teachers and School Support Staff, Local Council representatives, Local Authority representatives, Church representatives, Community representatives and the Headteacher.

Governors are appointed to help decide what is taught in school; set standards of behavior; interview and select staff; decide on how the school budget is set; ensure safety and security for all children and staff.

Parent governors have a child in school when they are appointed and are elected by other parents. All governors serve for four years.



Our School Layout

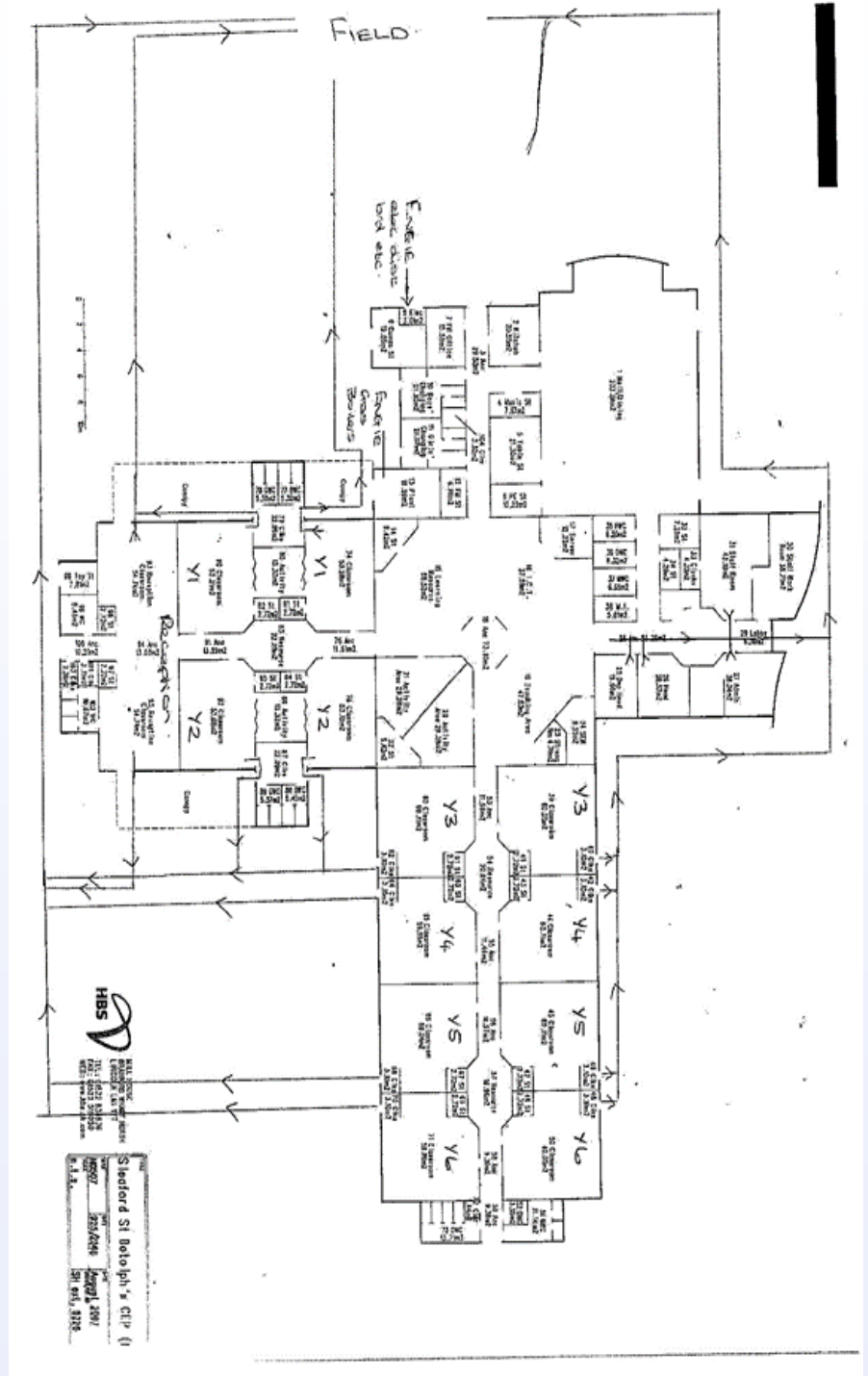
Staff Structure

Each year group at St Botolph's consists of 2 classes and each class has one qualified teacher.

Classroom assistants are very important to the teaching and learning at our school. Every year group is supported by at least one qualified classroom assistant.

The School Office has five part-time ladies who deal with all financial and administrative matters relating to the school.

Our school caretaker and cleaners are employed by a Private Finance Company—Equans.



St Botolph's Church

OUR SCHOOL PRAYER

Dear God

Thank you for St Botolph's School

Bless everyone who comes to our school

Help us to learn, share and play together

And to care for each other and our world

Help us to try hard in everything we do

Amen



'Striving to be the best we can'



Our Christian School

At St Botolph's all children are involved in act of Collective Worship. Our acts of Collective Worship aim to reflect the broad traditions and values of Christian belief.



Before Starting School

A school year runs from 1 September to 31 August the following year. Children will be admitted to school at the beginning of the school year in which they are five, ie the September before their fifth birthday. The first class to which your child will be admitted is called the Reception Class. Official applications will be open to parents through the LCC website the October/November before their child is due to start school. The Local Authority will then apply the school's admissions policy and procedures and parents will be informed of the LA's decision in April. If there are more applications than places, the LA will automatically offer the second choice school. There will be an opportunity for parents to attend an opening evening and are most welcome to make an appointment to view the school at any time. We work closely with local nurseries. Once offers are made parents are invited to attend a meeting to learn more about school life, expectations, teaching methods and to meet the staff. The children also attend a school session to meet their new teacher.



Admissions

The first two days of the new academic year will be devoted to the Foundation Unit staff meeting each new child with their parents. This will be organized on an individual appointment basis and the children will then be admitted to school for specific sessions in small groups in order to settle in. These groups are normally organized by age. When all the children are in school and settled, they will the sessions will be extended to include lunch and then to a full day. These admission procedures have proved to be an extremely successful way of ensuring that your child gets the best and most settled start to their school life.

If you are moving the area you must first inform your Local Authority who will then liaise with Lincolnshire County Council and a school place allocated.

There is selective secondary education in Sleaford. All children are offered the opportunity to take an 11+ test at the beginning of Y6, these papers are marked externally and the results posted to parents in time to make a secondary school choice.



School Rules

Always be Honest

Always be Polite

Always be Careful

Always be Helpful

Always be Tidy

Always look after your World

Always try your Best

Always be a Friend

Uniform etc

Dark Grey skirt, pinafore, trousers (no leggings or jeans)

White polo shirt

Royal Blue cardigan or sweatshirt

White or Grey socks or tights

Sensible black shoes

Light blue and white check summer dress

PE

Royal Blue short

White T-shirt or T-shirt in house colour

Training shoes

Royal Blue Track Suit

ALL UNIFORM MUST BE LABELLED WITH CHILD'S NAME

JEWELLERY

Any acceptable jewellery listed below worn in school is the responsibility of the child, school can take no responsibility for loss or damage.

Watches

Stud earrings

Religious/medical talisman necklace or bracelet





Curriculum Intent

In a world that is ever changing, St Botolph's school believes in preparing the children for life's colourful journey. We encourage the children to have aspirations and give them strategies to be resilient and motivated learners enabling them to tackle the challenges that are ahead of them. We ensure that the children respect each other and their community around them, showing empathy and connecting with their local environment. We want our children to reach for the stars, be passionate about their learning and persevere even when things are difficult, showing courage, ambition and determination no matter what they face. We believe in making learning fun and engaging to allow every child the opportunity to succeed with pupil engagement and achievement at the heart of everything we do.

Through the acts of friendship and compassion the children will embrace each other and be truthful and honest whilst acknowledging their differences and similarities. They will share their fears and celebrate their accomplishments making sure that support and guidance are given when needed. The children show thankfulness for all the opportunities and experiences that are given to them during their journey at St Botolph's. It is important to us as a school that the children grow in confidence and have a positive mindset enabling them to become life-long learners when they leave us. We strongly believe this attitude will prepare them for the bright future that awaits them.

We hope that our children will aspire to a range of careers and personal interests in the future, and to ensure that they gain knowledge and skills across all subjects, we designed our curriculum to cover not only the statutory aspects of the National Curriculum but also to consider of our local heritage. This will include our proximity to a RAF Base, a local design hub, sports specialists within the local grammar school and other local amenities. We will endeavour to seek out and expose our children to areas and opportunities that they may not have had access to. We will also make sure that we give the children the opportunity to re-visit and recall previously learned knowledge and make sure that this is 'baked' into the curriculum.

Our key aim is that when children leave us to move on to secondary school, they have:

- confidence in themselves and their attitudes to learning
- the ability to communicate, socialise and listen to everybody.
- a firm grasp of basic skills, regardless of their start point
- the chance to recognise that there is life and opportunities beyond St Botolph's
- the drive to be aspirational and to aim high and challenge themselves to achieve great things in the future whether that means a job or travel.



Our Curriculum

The Foundation classes follow the Early Years Foundation Stage (EYFS) curriculum. The EYFS Profile summarises and describes children's attainment at the end of EYFS. It is based on ongoing daily observation and assessment in the three prime areas and four specific areas of learning and the three characteristics set out below.

Prime Areas

Communication & Language; Physical Development; Emotional Development

Specific Areas

English; Maths; Understanding the World; Expressive Arts & Design

Learning Characteristics

Play and Exploring; Active Learning; Creating and Thinking Critically

KS1 and KS2 follow the core curriculum areas of English; Maths and Science and the foundation curriculum areas of Art & Design; Computing; Design & Technology; Geography; History; Music and PE

The core areas of English, Maths and Science will feature most prominently in the curriculum. KS2 pupils also learn a foreign language.

The foundation subjects are compulsory and will therefore command an important place in the teaching context. In addition, we follow the Lincolnshire Agreed Syllabus for Religious Education

Our Curriculum

What else do we teach?

Health Education

Environmental Awareness

Economic & Industrial Awareness

Equal Opportunities

Multi Cultural Awareness

Person & Social Skills

Sex Education

Children's progress and attainments are carefully monitored and recorded by teachers. The information is used to ensure children are given work at an appropriate level to their needs. Day to day assessment in all subjects forms the basis of future planning. Assessed work is moderated by the



Teaching staff and is tracked for evidence of children's achievements in all the curriculum subjects.

HOMEWORK

All teachers will be asking the children to undertake certain tasks at home. These tasks will range from written work to investigations. We want learning to be fun in school and at home so our curriculum and homework supports this philosophy. All children will be expected to take home a reading book and all adults supporting the reading process are requested to fill in this record.

Please do not hesitate to contact your child's teacher if you are confused about the work your child is expected to do at home.





Gifted and Able Children

Most children at some time will have 'special needs' which will affect their learning in school. Some children will have special needs all their life. These may in the form of physical disabilities, medical conditions, language or learning difficulties, emotional or behavioural problems. If your child needs support as a result of having any of these special needs we will work with you to suggest a programme of support. Usually parents are well aware of their child's problems and are pleased to be able to help them overcome them or learn to live with them. An individual education plan will be drawn up and implemented. This will be reviewed on a regular basis. Sometimes the school will have to draw on the expertise of outside agencies such as speech & language, LEA learning support agency, physiotherapists, psychologists etc. In extreme cases, a child may have to be referred to request additional support. If granted, an EHC is drawn up identifying the child's individual requirements. The LEA has to provide this support, usually in the form of additional one to one help or a piece of specialist equipment. There is a SEN policy in school which details the process.

All children on the SEN register are taught in mainstream classes. They may be removed for short periods to implement an individual programme such as speech therapy or an exercise session.



Trips and Visits at St Botolph's

We believe that first hand experience is a vital aspect of learning, therefore we feel that visits to places of educational interest are extremely important. Due to our location many visits incur a charge, we try to subsidise where we can, however, we inevitable have to ask parents for a voluntary contribution towards the costs. If the contributions fall short, the visit will have to be cancelled. We would never exclude a child from a visit if their parents do not wish to pay but wish their child to take part.

Children in KS2 have the opportunity to take part in a residential visit. The activities are undertaken during school time and linked to the curriculum so we do not make a charge for the educational activities, but do make a charge for the accommodation, transport, insurance, and specialist instruction for certain activities. Parents in receipt of state benefits are exempt from these charges but we do ask for a contribution towards the transport cost to enable the visit to go ahead.



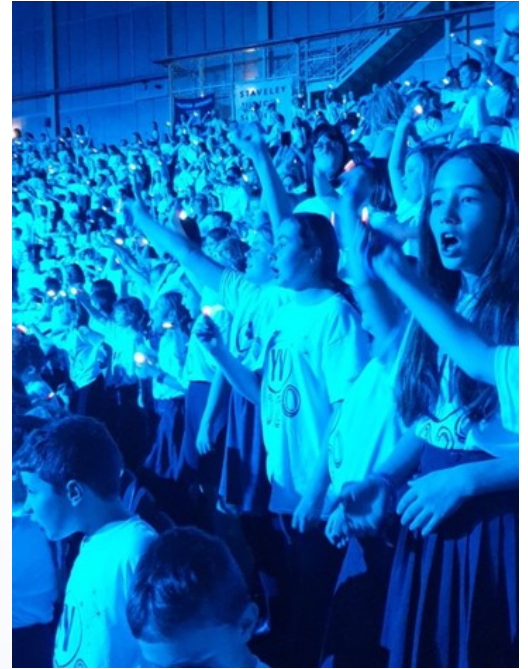
School Council

We have a School Council made up of one Councillor and one Deputy from each class in Years 1 to Y6.

The Council meets on a regular basis to discuss aspects of school life and pass on ideas and make recommendations to the School Leadership Team .

Clubs and Opportunities

Extra Curricular Clubs allow us to offer activities which we are unable to focus on in the school curriculum. There is no obligation on staff to run these clubs as they are giving up their own time to do this. There is a limit to the numbers of children admitted to each club.



Forces Children

To enable schools to offer pastoral and emotional support during challenging times and to help mitigate the negative impact on service children of family mobility or parental deployment,, schools receive funding of £300 per year per service pupil. Schools have to account how this is spent.



Supporting Children of Armed Forces Personnel in School

If the school environment is responsive to the specific issues which service children can face, those children will be supported and thus thrive.

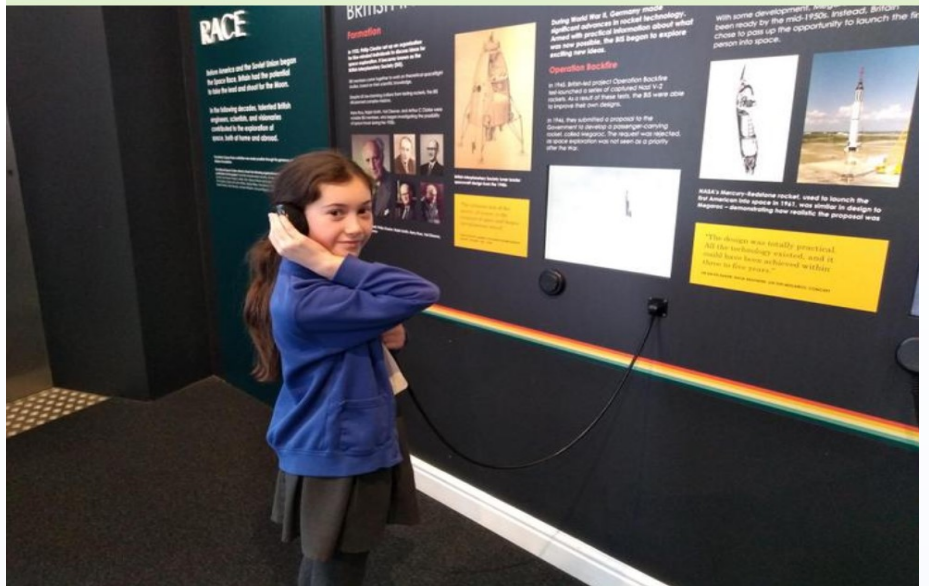
Service children will have different experiences and may move home frequently, with the resultant disruption in education and friendships. Leaving behind old friends and making new ones is one of the biggest challenges service say they face. They can miss key parts of the curriculum and unwittingly repeat other parts.

Service children may have extended periods when their serving parent is away from home, apart from missing the parent, this could also mean parents being unable to attend key events. Children may worry about a parent on active deployment, when the parent returns this can also bring adjustments to the family.

There can be significant benefits for service children of being part of the armed forces community and the challenges they may face can also increase their resilience. They may therefore develop strong leadership, peer mentoring, organisational skills and other positive attributes.



Home/School Communication



Parents are kept informed about important issues through monthly newsletters and letters sent directly via the Parentmail system.

Parents who wish to see their child's class teacher or the Headteacher are requested to make an appointment either through the School Office, or the Class Dojo system.

Formal Parents' Evenings are held during the Autumn and Spring Terms, by appointment to discuss children's work and progress.

School reports are sent home at the end of the Summer Term.



Lunchtime

Key Stage 1—12.05pm—1.05pm

Key Stage 2—12:10pm—1:10pm

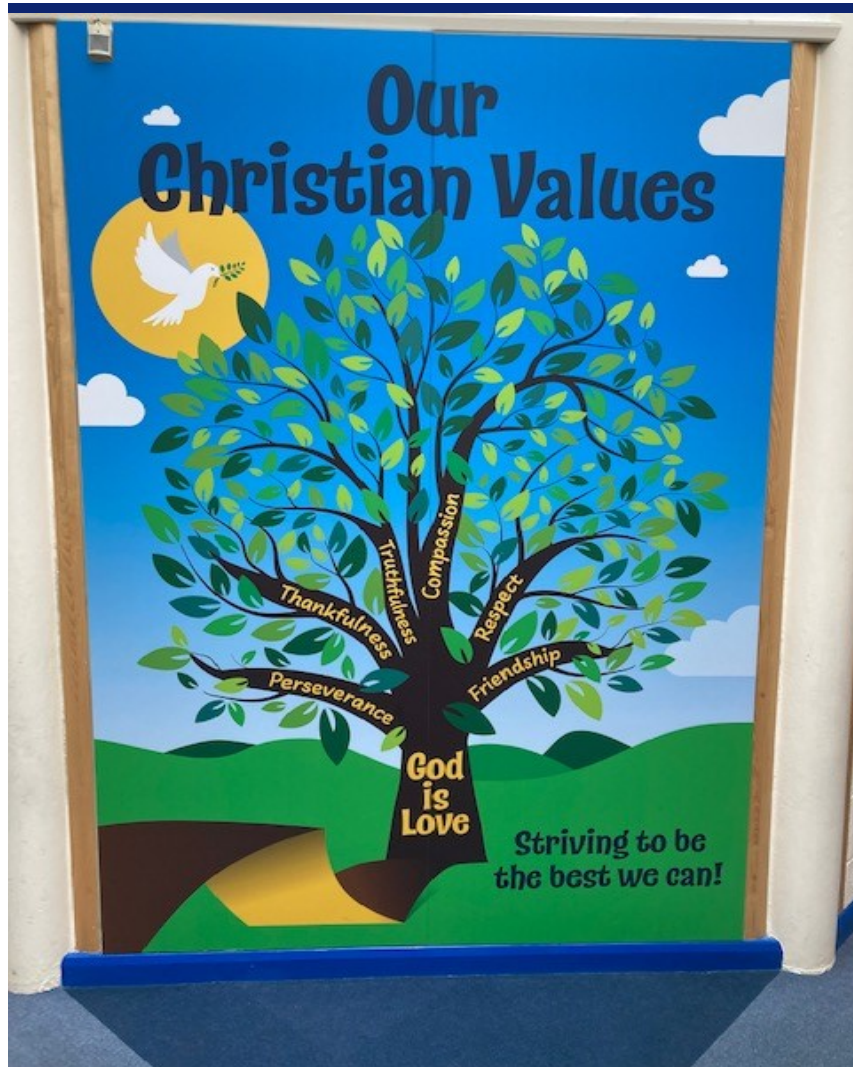
We are able to offer hot meals via our hot school meals provider, Good Lookin Cookin. All meals are ordered direct with them on line.

Meals cost £2.30 per day per child
FSM meals are also to be ordered via the on line ordering system.

Uniform and School Meals

If you are on Income Support, earnings related Job Seekers Allowance or Child Tax Credit, you may be eligible for Free School Meals. Application for children to receive FSM can be made via the LCC website. If you are eligible but not interested in received free school meals for your child, we will still need to know, please inform the school office. All information is dealt with in the strictest confidence.

You may be aware that from September 2014 all children in Reception, Y1 and Y2 are eligible to receive the Universal Infant Free School Meal. This is completely different to the Free School Meals.



St Botolph's Church of England Primary School

Rookery Avenue
Sleaford
NG34 7FE

Tel: 01529 302698

Email: enquiries@stbotolphs.co.uk